

THE PRESIDENTIAL AT THE PRESIDENT COUNTRY CLUB

BEING A REPLAT OF A PORTION OF TRACT 'C' AND ALL OF TRACT 'D', PLAT I, THE PRESIDENT COUNTRY CLUB, WEST PALM BEACH, FLORIDA, ACCORDING TO THE PLAT THEREOF AS RECORDED IN PLAT BOOK 29, PAGE 72, PUBLIC RECORDS OF PALM BEACH COUNTY, FLORIDA, AND A PORTION OF LOT 8, PLAT II, THE PRESIDENT COUNTRY CLUB, ACCORDING TO THE PLAT THEREOF AS RECORDED IN PLAT BOOK 29, PAGES 113 & 114, PUBLIC RECORDS OF PALM BEACH COUNTY, FLORIDA, AND ALL OF PARCEL "A" AND A PORTION OF PARCEL "B", A MINOR SUBDIVISION PLAT OF LOT 8, PLAT II, THE PRESIDENT COUNTRY CLUB, ACCORDING TO A MINOR SUBDIVISION PLAT THEREOF AS RECORDED IN OFFICIAL RECORD BOOK 2073, PAGE 742, PUBLIC RECORDS OF PALM BEACH COUNTY, FLORIDA, AND ALL OF PARCEL "B-1", A MINOR SUBDIVISION PLAT OF PARCEL "A" AND PORTIONS OF PARCEL "B" OF MINOR SUBDIVISION PLAT, LOT 8 PLAT II THE PRESIDENT COUNTRY CLUB ACCORDING TO A MINOR SUBDIVISION PLAT THEREOF AS RECORDED IN OFFICIAL RECORD BOOK 3152, PAGE 194, PUBLIC RECORDS OF PALM BEACH COUNTY, FLORIDA.

LYING IN SECTION 17, TOWNSHIP 43 SOUTH, RANGE 43 EAST, CITY OF WEST PALM BEACH, PALM BEACH COUNTY, FLORIDA.

STATE OF FLORIDA
 COUNTY OF PALM BEACH
 This plat was filed for record at _____ this _____ 2009, and duly recorded in Plat Book _____ Pages _____ Through _____

SHARON R. BOCK
 Clerk & Comptroller
 By: _____

SHEET 2 OF 2

TRACT "A"
 PLAT I
 THE PRESIDENT COUNTRY CLUB
 P.B.29, PG'S 72-76, P.B.C.R.

TRACT "C"
 PLAT I
 THE PRESIDENT COUNTRY CLUB
 P.B.29, PG'S 72-76, P.B.C.R.

PARCEL "A"

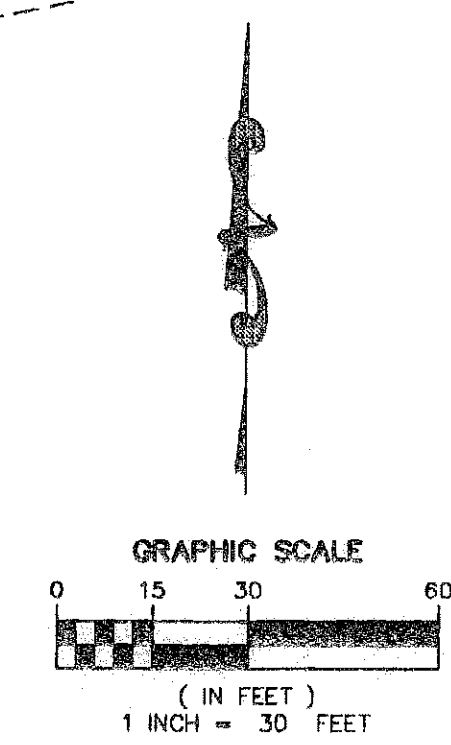
10' UNDERGROUND EASEMENT FOR FLORIDA POWER & LIGHT COMPANY
 P.B. 29, PG'S. 72-76, P.B.C.R.

10' UNDERGROUND EASEMENT FOR FLORIDA POWER & LIGHT COMPANY
 ORB 1807, PG'S 224,225 P.B.C.R.

8' TO CENTERLINE OF 10' UNDERGROUND EASEMENT FOR FLORIDA POWER & LIGHT COMPANY
 ORB 1807, PG'S 224,225 P.B.C.R.

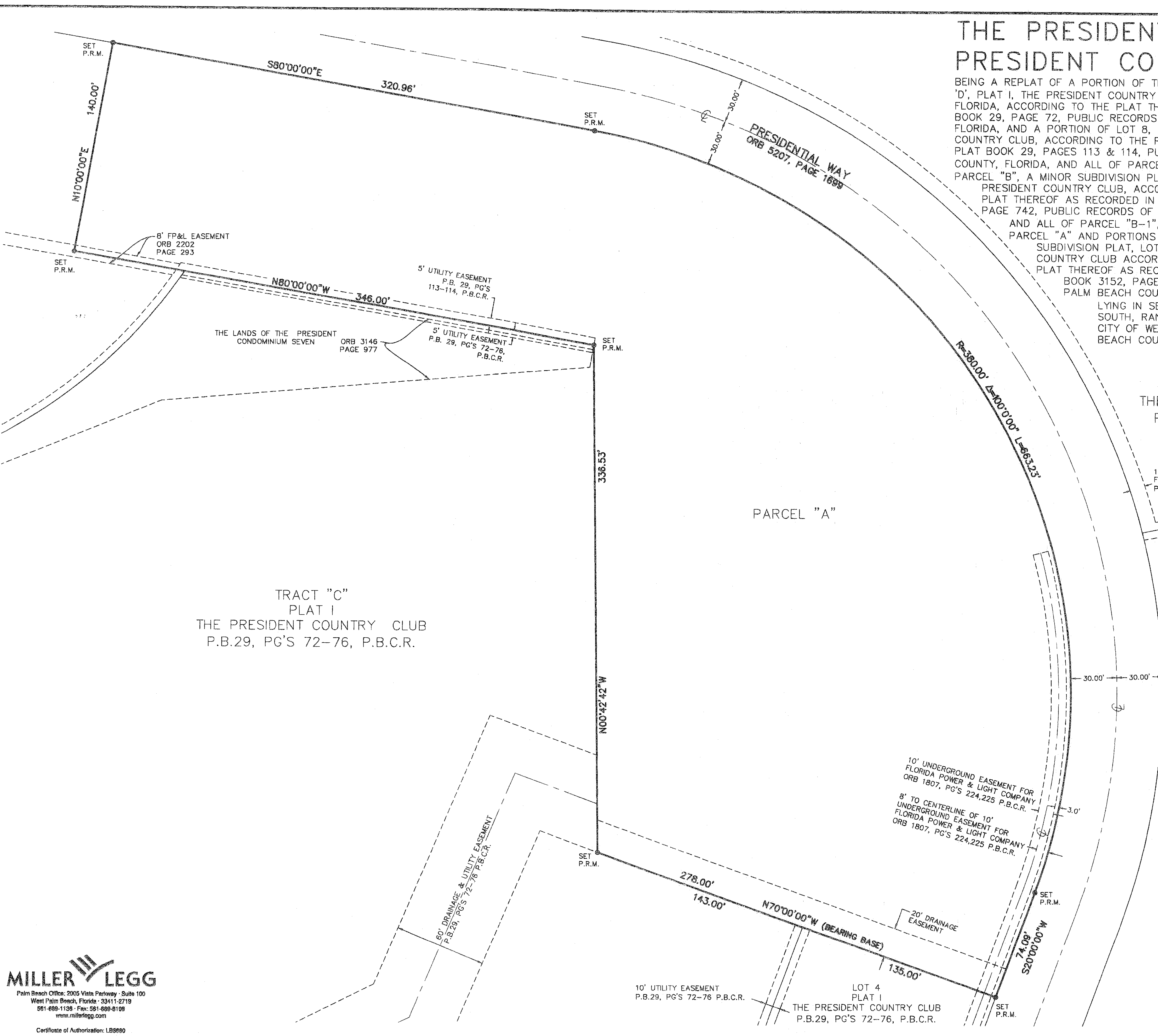
10' UTILITY EASEMENT
 P.B.29, PG'S 72-76 P.B.C.R.

LOT 4
 PLAT I
 THE PRESIDENT COUNTRY CLUB
 P.B.29, PG'S 72-76, P.B.C.R.



NOTICE:
 THIS PLAT, AS RECORDED IN ITS GRAPHIC FORM, IS THE OFFICIAL DEPICTION OF THE SUBDIVIDED LANDS DESCRIBED HEREIN AND WILL IN NO CIRCUMSTANCES BE SUPPLANTED IN AUTHORITY BY ANY OTHER GRAPHIC OR DIGITAL FORM OF THE PLAT.
 THERE MAY BE ADDITIONAL RESTRICTIONS THAT ARE NOT RECORDED ON THIS PLAT THAT MAY BE FOUND IN THE PUBLIC RECORDS OF THIS COUNTY.

LEGEND:
 P.B. = PLAT BOOK
 PG'S = PAGES
 ORB = OFFICIAL RECORD BOOK, PALM BEACH COUNTY, FL
 P.B.C.R. = PALM BEACH COUNTY RECORDS
 FP&L = FLORIDA POWER AND LIGHT
 C = CENTER LINE
 R = RADIUS
 Δ = CENTRAL ANGLE
 L = ARC LENGTH
 P.R.M. = PERMANENT REFERENCE MONUMENT
 (18" METAL ROD WITH ALUMINUM DISC IN 24" LONG (4"x4" SQUARE) CONCRETE.)
 LB#6680



MILLER LEGG
 Palm Beach Office: 2005 Vista Parkway - Suite 100
 West Palm Beach, Florida - 33411-2719
 561-689-1139 - Fax: 561-689-0109
 www.millerlegg.com
 Certificate of Authorization: LB8880